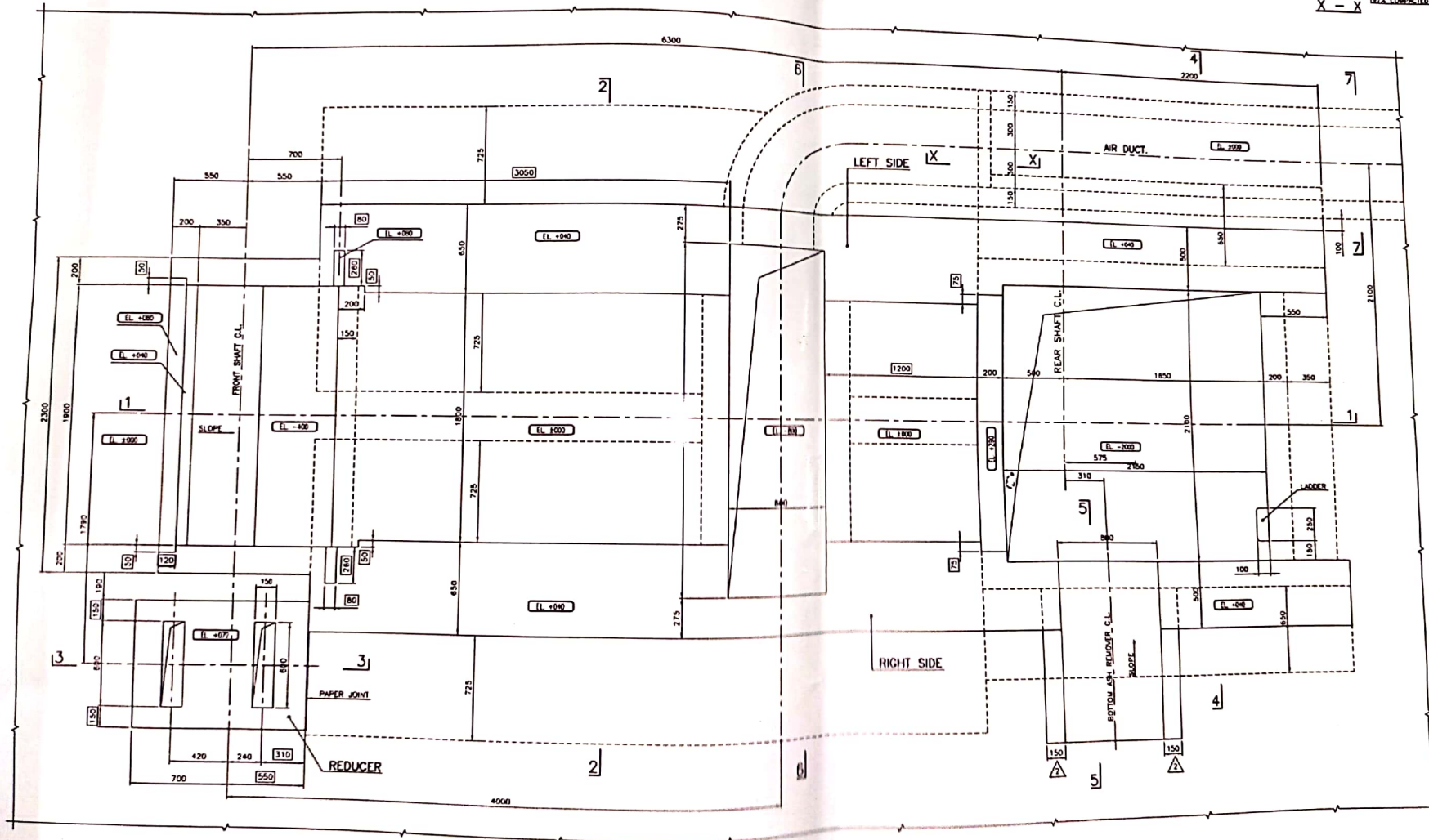
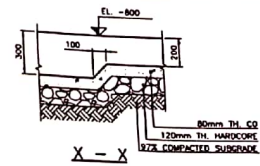


NOTES:-

- THIS DRAWING SHOULD BE READ IN CONJUNCTION WITH ALL SUPPLIER'S DRAWINGS.
- ALL DIMENSIONS AND LEVELS ARE IN MILLIMETERS.
- BOXED IN DIMENSIONS TO BE VERIFIED BY SUPPLIER.
- FOR REINFORCEMENT DETAILS REFER DWG. NO. EXT-BH-203.
- FOR SECTIONS REFER DWG. NO. 887-01/EXT-BH-202.
- FOR GENERAL NOTES REFER DWG. NO. 887-01/EXT-201A.
- ALL DIMENSIONS AND LEVELS TO BE VERIFIED BY THE SUPPLIER.

PR/04/003 ISSUE-2

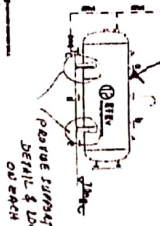




2261-0(2)



2. 本手册之附件可作为参考，具体尺寸根据之Baker accessories shown are for reference only, the specific size determined in accordance with actual installation location
3. 流量係用7自理。
Flow meters are in direct scope.



TUFF BOILER INTL.CO.,LTD

SHOW TITLE BLOCK IN EVERY OTHER LINE
SHOW DRAWING NUMBER & DATE OF ISSUE
FILED UP.